

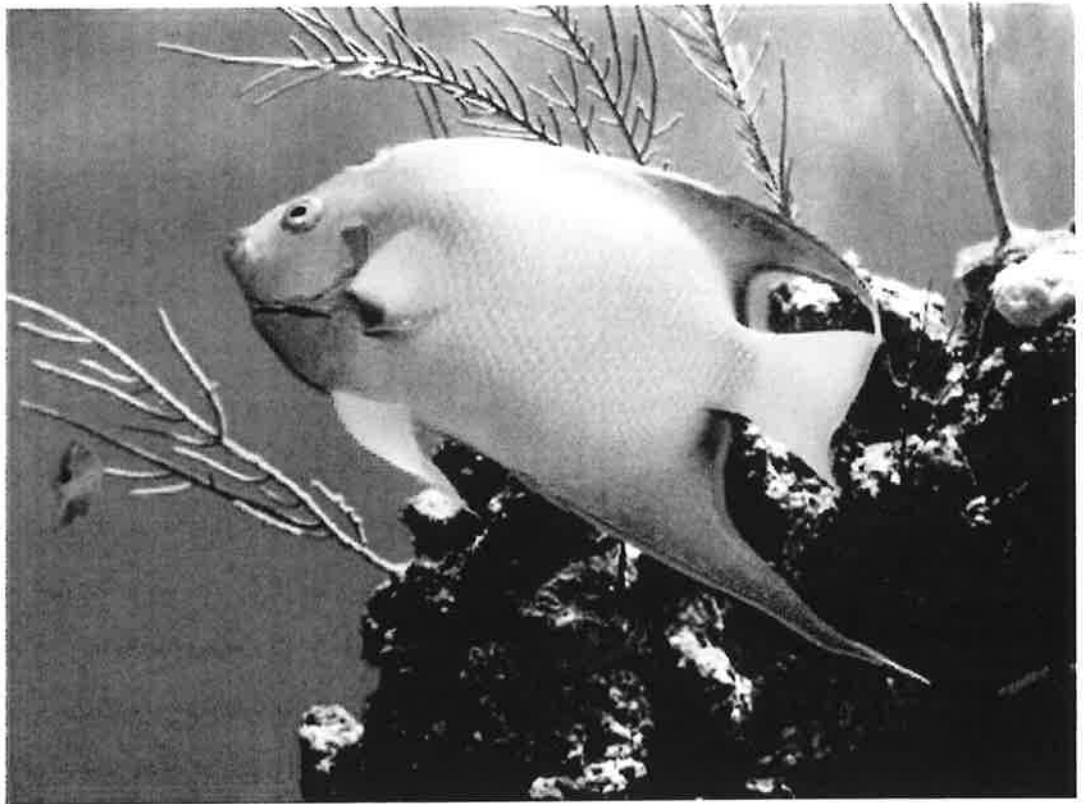
With backbones



Birds

- have feathers and wings
- lay eggs
- warm-blooded

Vertebrates **With backbones**



Fish

- **breathes under water using gills**
- **lay eggs**
- **cold-blooded**
- **have scales and fins**

Vertebrates **With backbones**



Amphibians

- **live on land and in water**
- **moist, slimy skin**
- **webbed feet**
- **lays eggs in water**
- **cold blooded**

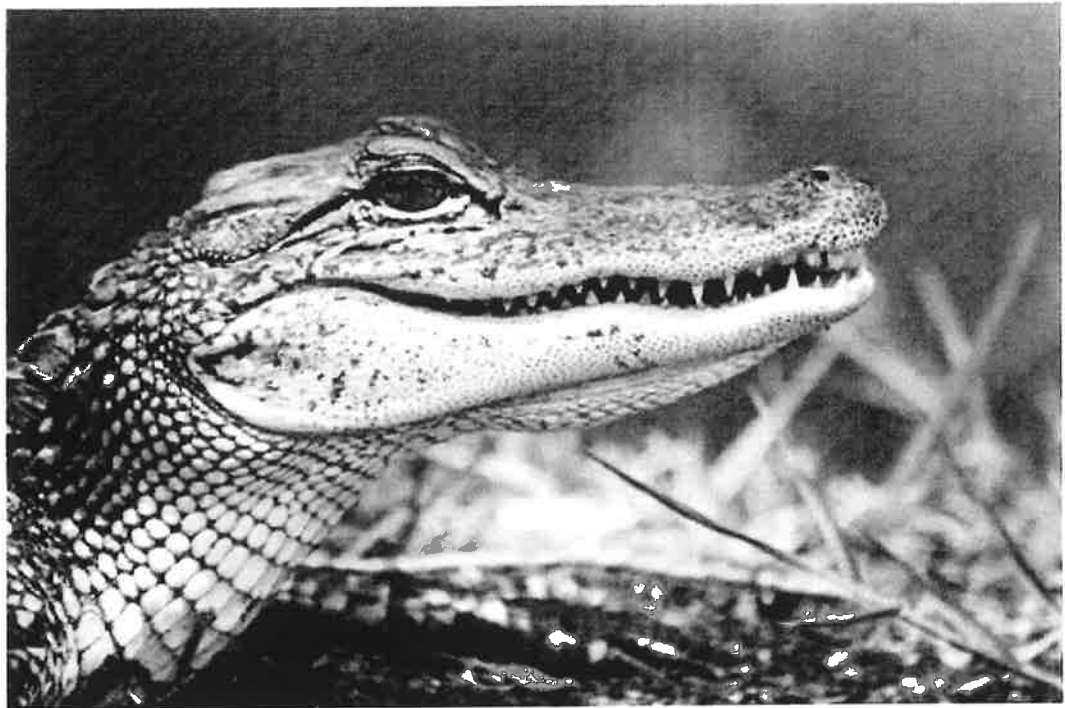
Vertebrates **With backbones**



Mammals

- **have hair or fur**
- **gives birth to live young**
- **mothers nurse their young**
- **warm-blooded**

Vertebrates With backbones

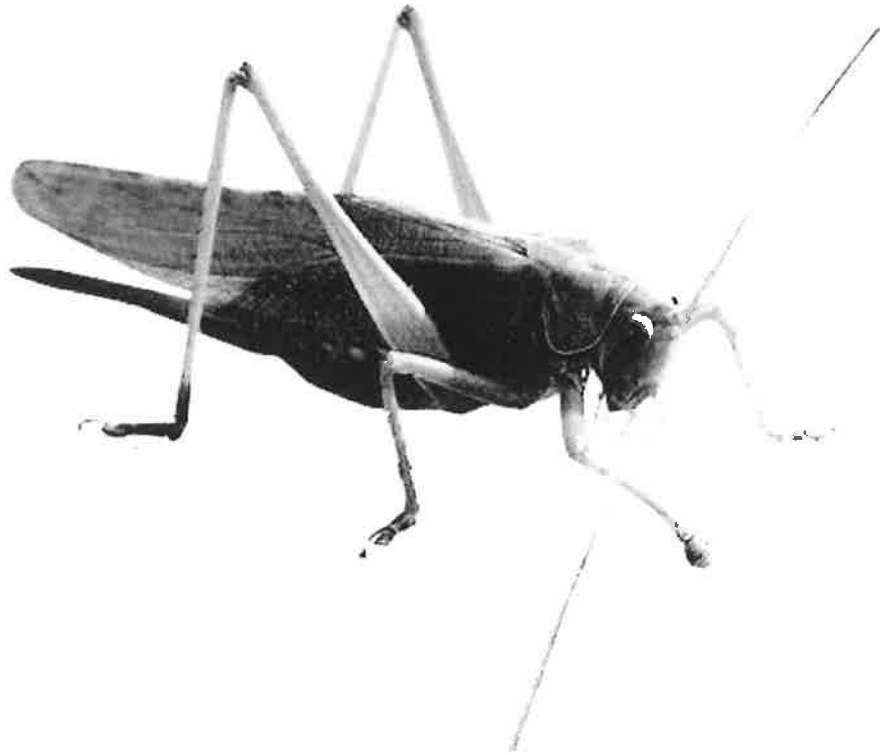


Reptiles

**dry skin
have scales
cold-blooded
usually lay eggs, sometimes
live young**

INVERTEBRATES

No backbones



Insects

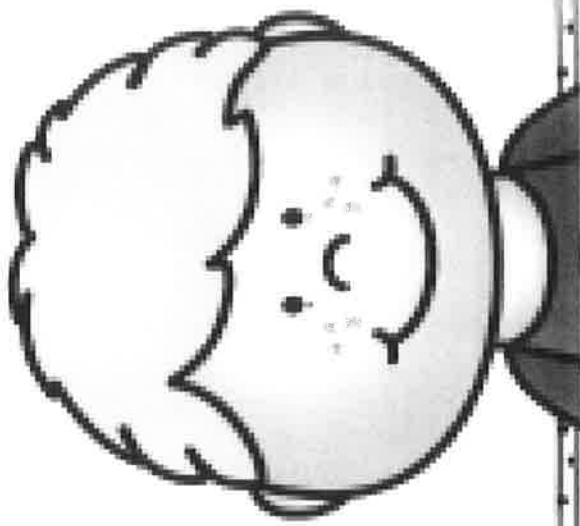
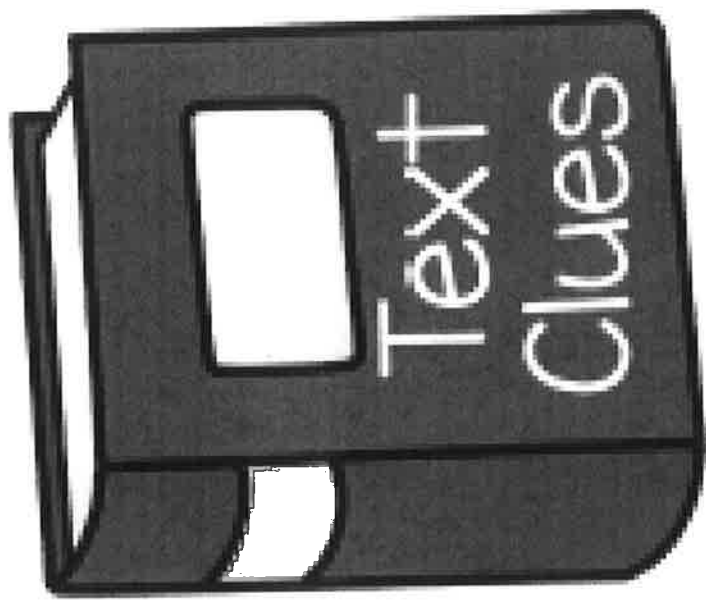
- **three body parts**
- **six legs**
- **two antennae**
- **hard exo-skeleton**
- **cold-blooded**

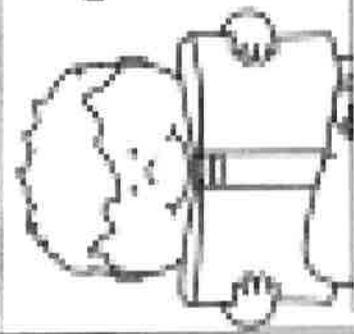
Inference

What I

Know

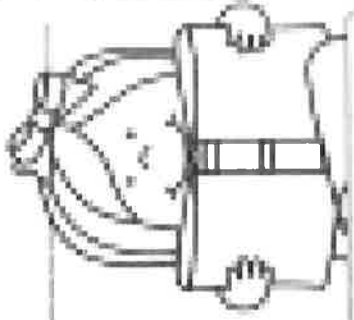
+





Name _____

TIME TO INFER


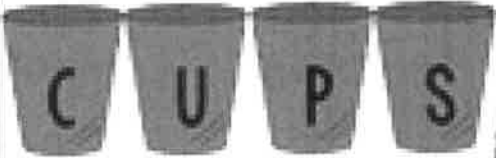


As you are reading your book, pay attention to inferences you make. Then write the clues you used, and what you inferred.

TEXT CLUES

I INFER

Wk. 3 Writing Resources

Revise	Edit
	
A <u>A</u> dd sentences and words	C <u>C</u> apitals: sentences, names, places, months, titles, I
R <u>R</u> emove unneeded words or sentences	U <u>U</u> sage: match nouns and verbs correctly
M <u>M</u> ove a sentence or word placement	P <u>P</u> unctuation: . ? ! , " "
S <u>S</u> ubstitute words or sentences for others	S <u>S</u> pelling: Check all words, use your resources

Organization

- You have a good introduction.



- You have details that are in an order that makes sense.

- You have a good conclusion.

Structure of a Persuasive text

1 Introduction

An opening statement is given, presenting the issue or argument and the writer's point of view.

2 Main-body of text

A paragraph stating each argument is given. The most important argument is given in the first paragraph. Less important arguments follow in order. Supporting evidence, reasons or facts are given for each argument.

3 Conclusion

The issue is repeated with a short summary of the arguments stated in the main body. A concluding statement is given.

Near Doubles

Calculate these doubles and then work out the near doubles.

1) $8 + 8 =$	2) $11 + 11 =$	3) $12 + 12 =$
$8 + 9 =$	$11 + 12 =$	$12 + 13 =$
$8 + 10 =$	$11 + 13 =$	$12 + 14 =$
$7 + 8 =$	$10 + 11 =$	$11 + 12 =$
$7 + 9 =$	$10 + 12 =$	$13 + 11 =$
$8 + 6 =$	$11 + 9 =$	$12 + 10 =$

Near Doubles

Calculate these doubles and then work out the near doubles.

1) $12 + 12 =$	2) $18 + 18 =$	3) $24 + 24 =$
$12 + 13 =$	$18 + 19 =$	$24 + 25 =$
$12 + 14 =$	$18 + 20 =$	$24 + 26 =$
$11 + 12 =$	$17 + 18 =$	$23 + 24 =$
$13 + 11 =$	$19 + 17 =$	$25 + 23 =$
$12 + 10 =$	$18 + 16 =$	$24 + 22 =$

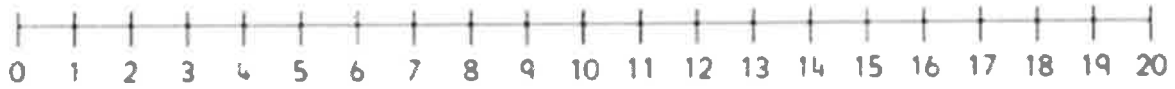
Near Doubles

Calculate these doubles and then work out the near doubles.

1) $24 + 24 =$	2) $32 + 32 =$	3) $47 + 47 =$
$24 + 25 =$	$32 + 33 =$	$47 + 48 =$
$24 + 26 =$	$32 + 34 =$	$47 + 49 =$
$23 + 24 =$	$31 + 32 =$	$46 + 47 =$
$25 + 23 =$	$31 + 33 =$	$46 + 48 =$
$24 + 22 =$	$32 + 30 =$	$46 + 44 =$

☆☆ Number Line Addition ☆☆

Finish the number sentences. Use the number line to help.



$2 + 17 = \square$

$4 + 16 = \square$

$12 + 5 = \square$

$19 + 1 = \square$

$9 + 8 = \square$

$6 + 9 = \square$

$7 + 7 = \square$

$17 + 1 = \square$

$3 + 13 = \square$

$5 + 7 = \square$

$15 + 2 = \square$

$8 + 3 = \square$

$10 + 4 = \square$

$16 + 3 = \square$